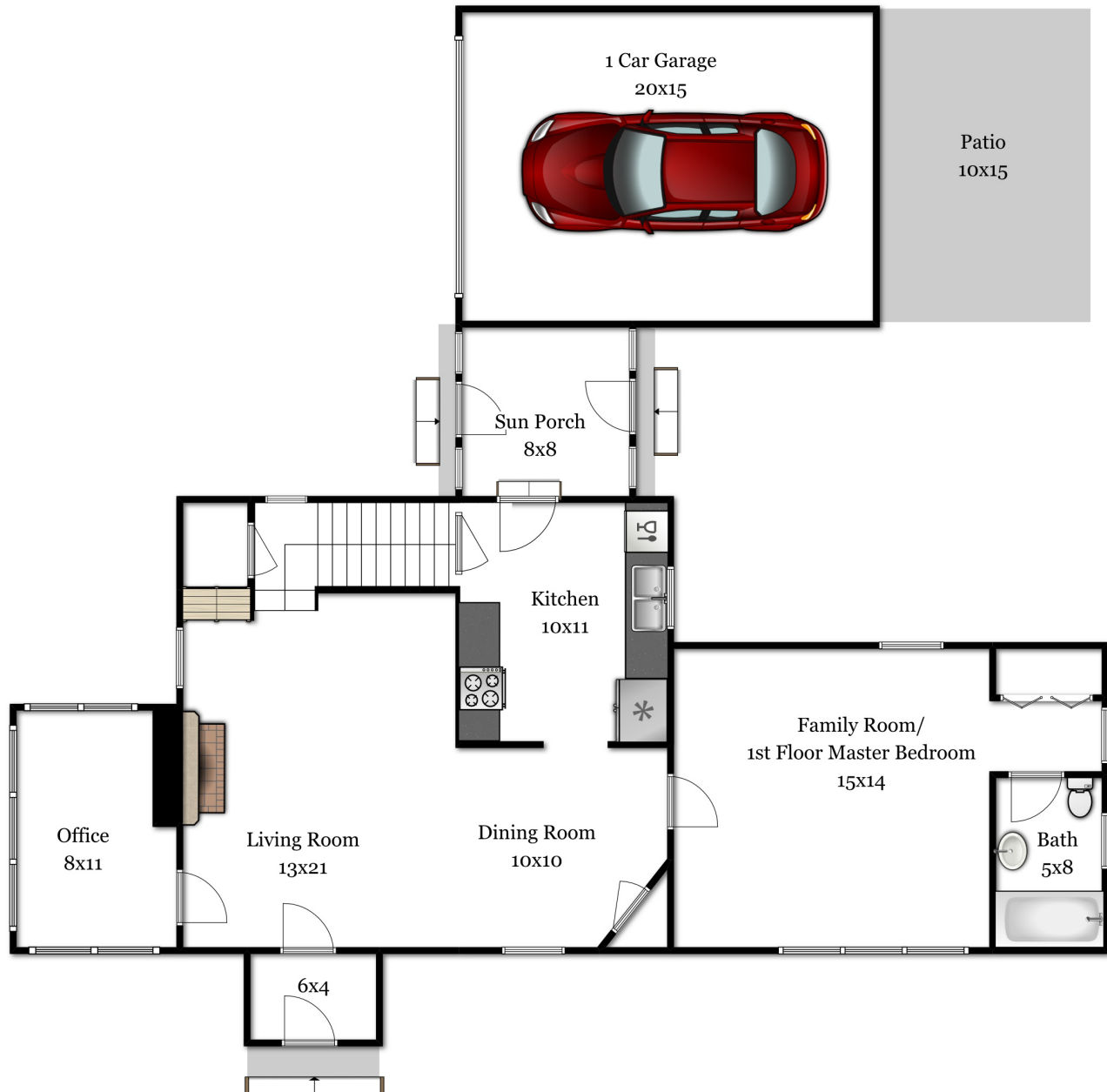


552 Shrewsbury Street Holden, MA 01545

First Floor



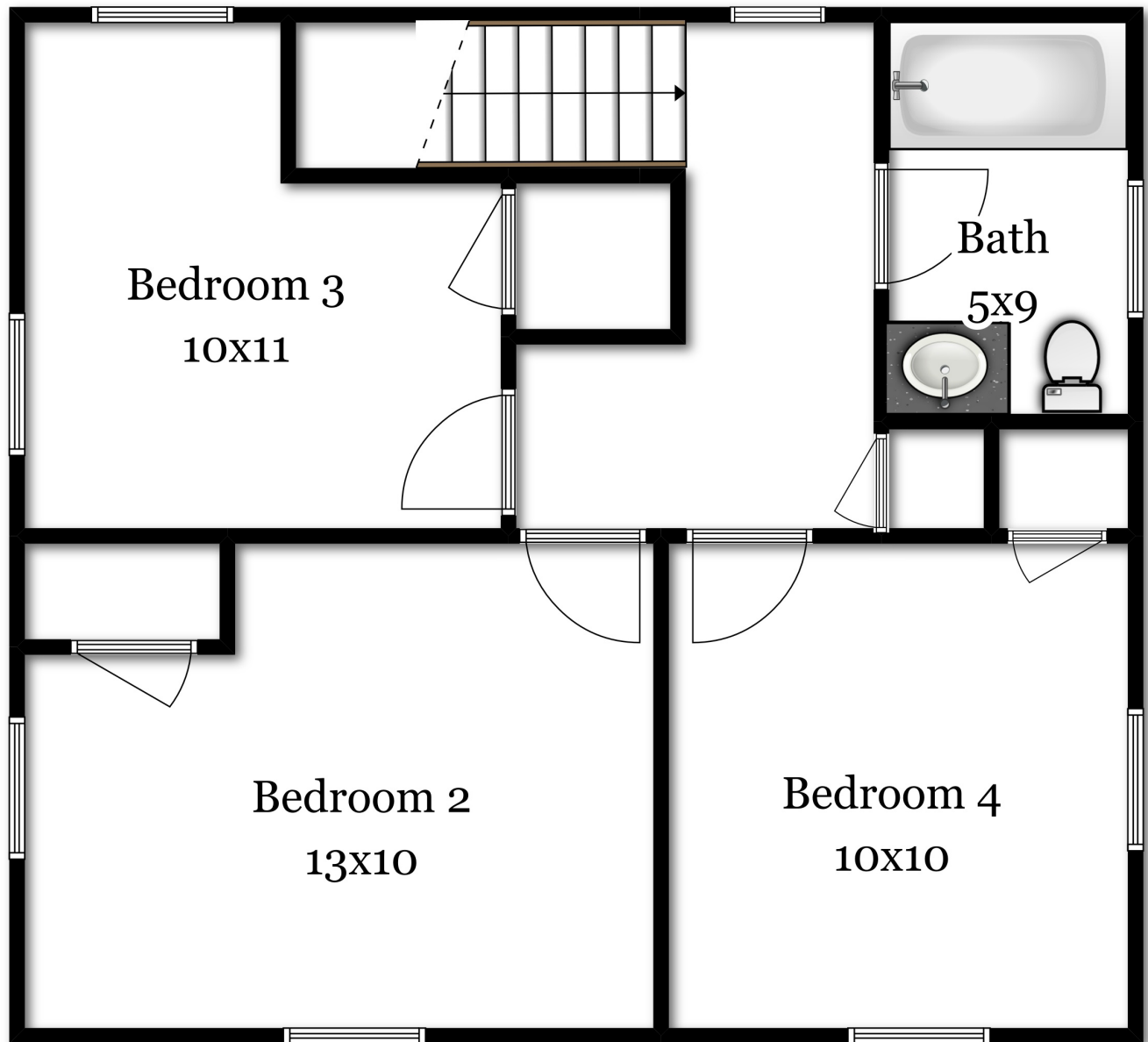
Amy Mullen
Re/Max Professional Associates
(617) 899-2146

Plans for marketing purposes only. All measurements are approximate.

 **BEST VIEW**
IMAGING
Showcase your listing from its Best View

552 Shrewsbury Street Holden, MA 01545

Second Floor



Amy Mullen
Re/Max Professional Associates
(617) 899-2146

Plans for marketing purposes only. All measurements are approximate.



Showcase your listing from its Best View