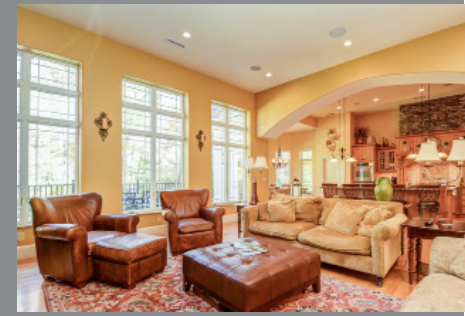


JUST LISTED

59 ARMSBY ROAD | SUTTON, MA



Photos and Flyer provided by Best View Imaging

Luxurious 7525 sqft home on 1.85 acres abutting Pleasant Valley CC in Sutton. Easy access to major routes. Main floor offers tons of natural light, 12ft ceilings, office, elegant open fireplace, stone fireplace surrounded by custom built-in bookcases, large windows, master suite with 2 large walk-in closets, steam shower, 2 additional bedrooms that share a bath. Formal dining room, wet bar, spacious open kitchen with Sub-Zero fridge, Bosch dishwasher, Wolf stove, double built-in ovens with warmer, walk-in pantry. Additional kitchen seating area leads to expansive wrap-around deck & hot tub. Attached 1 car garage. 2nd floor hosts large TV room with bonus room. Full 2600 sqft in-law suite with 9ft ceilings in finished lower level. Master bedroom/bath, double walk-in closets, guest bedroom, office, full bath, dining room, open kitchen with dining area, living room with fireplace. External access to covered patio & attached 1 car garage. Additional 2 car detached garage with room for 10 cars in driveway. ICF construction & geothermal heating/cooling system creates a quiet comfortable environment while minimizing bills.