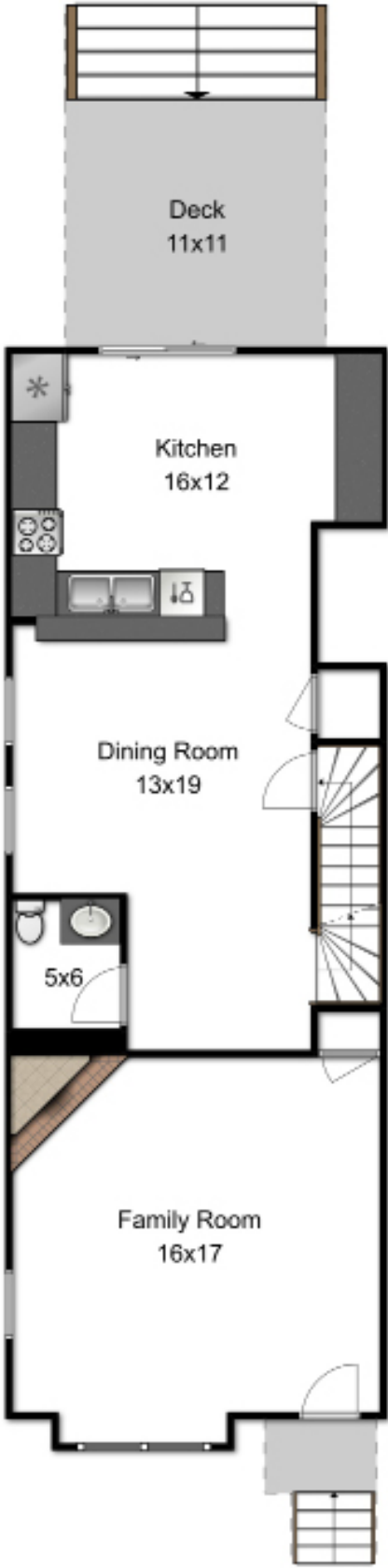


65 Morse Street Unit 65

Watertown, MA 02472

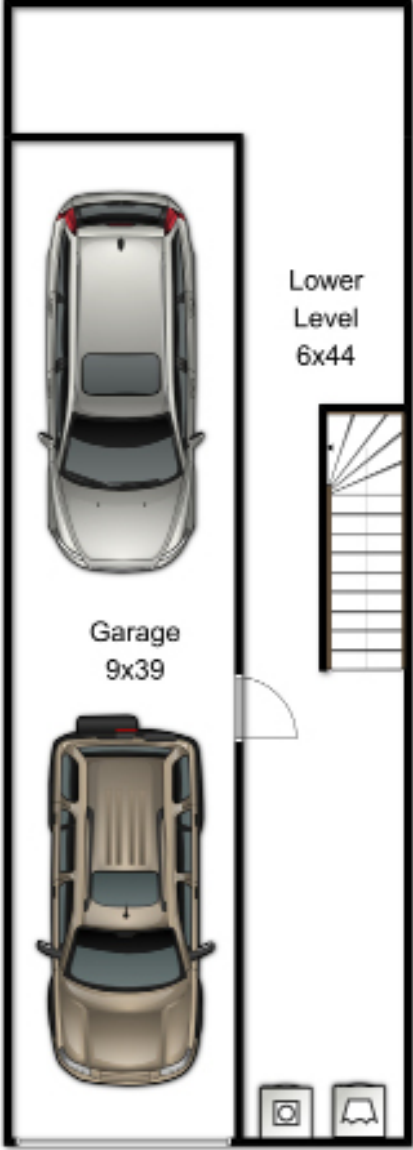
www.65MorseSt.com



First Floor



Second Floor



Lower Floor



3 Bedroom | 2.5 Bath

Entering Watertown! Move-in ready duplex-style 3 bed 2.5 bath townhouse w/garage parking & private yard in convenient Watertown neighborhood. Perfectly situated on side-street between Newton Corner & Watertown Sq, this home is commuter's dream. Walk to MBTA buses to Boston (express) or Cambridge. Commuter rail & Greenline nearby. Easy access to MA-90, I-95, Rtes 20 & 16. Close to Charles River, path, parks as well as restaurants & shopping. This home has floorplan & space you are looking for! Open main level. Spacious living room w/fireplace. Separate dining area w/breakfast bar. Large kitchen w/plenty of cabinet storage & counterspace as well as stainless steel appliances. Slider to private deck & yard. Upstairs has 3 good-sized bedrooms & 2 full bathrooms—including master suite. Excellent natural light & gleaming hardwoods throughout. Gas heat & AC. Laundry area in basement w/dryer cabinet. Lots of closet space & storage. Many updates. Low condo fee. Pet-friendly. Don't miss it!

65 Morse Street Unit 65

Watertown, MA 02472

3 Bedroom | 2.5 Bath

