

# 9 Prospect Heights

Ashland, MA 01721



First Floor

Amy Mullen of Re/Max Professional Associates | (617)-899-2146 | Amymullen@remax.net

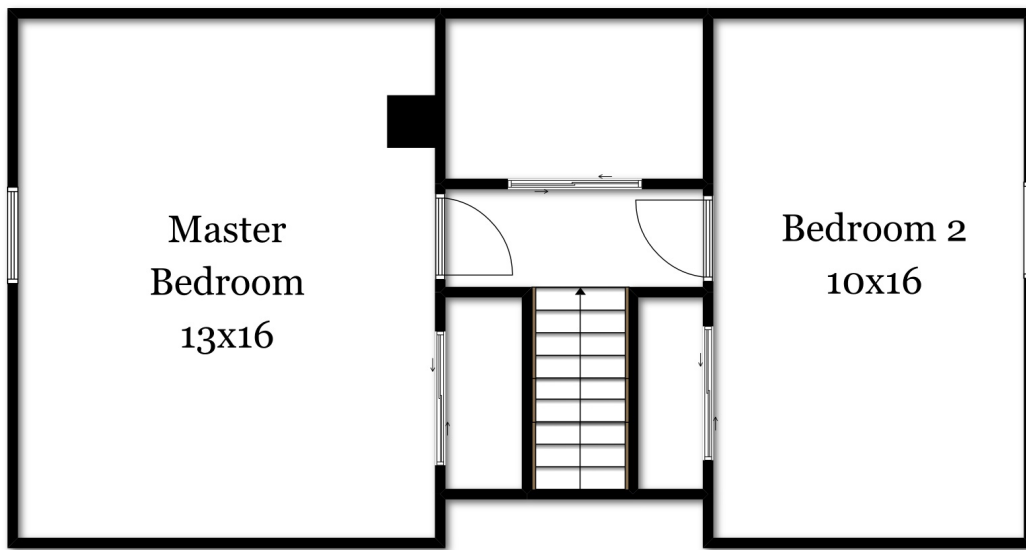


Disclaimer:  
Floor Plans are for marketing purposes only. All rooms and measurements are approximate.  
Floor Plan by Best View Imaging

# 9 Prospect Heights



Ashland, MA 01721



Second Floor

Amy Mullen of Re/Max Professional Associates | (617)-899-2146 | Amymullen@remax.net

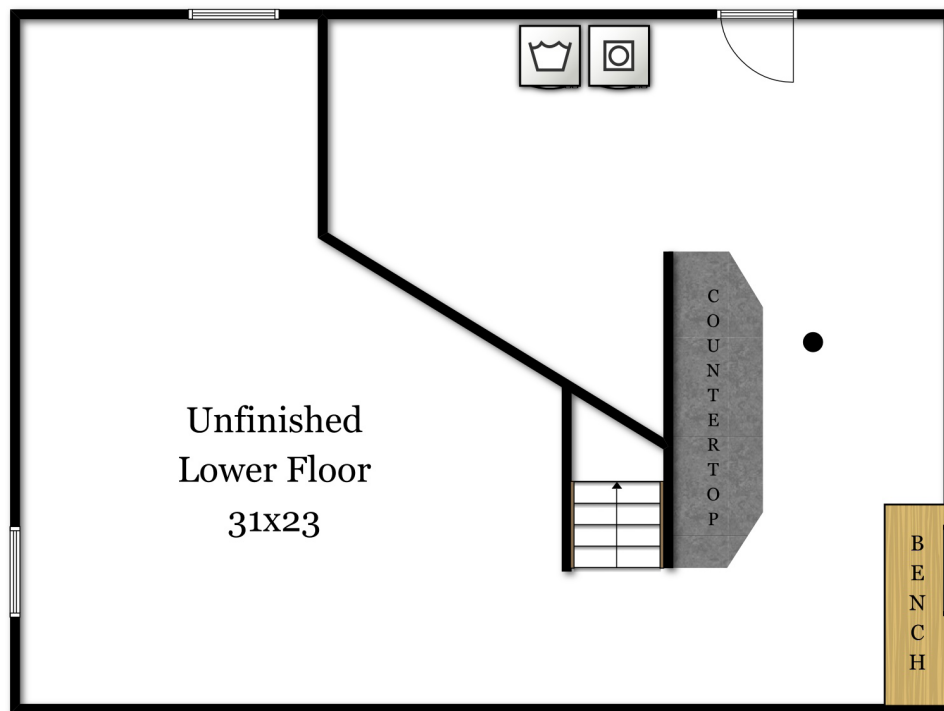


Disclaimer:  
Floor Plans are for marketing purposes only. All rooms and measurements are approximate.  
Floor Plan by Best View Imaging

# 9 Prospect Heights



Ashland, MA 01721



Lower Floor

Amy Mullen of Re/Max Professional Associates | (617)-899-2146 | Amymullen@remax.net



Disclaimer:  
Floor Plans are for marketing purposes only. All rooms and measurements are approximate.  
Floor Plan by Best View Imaging