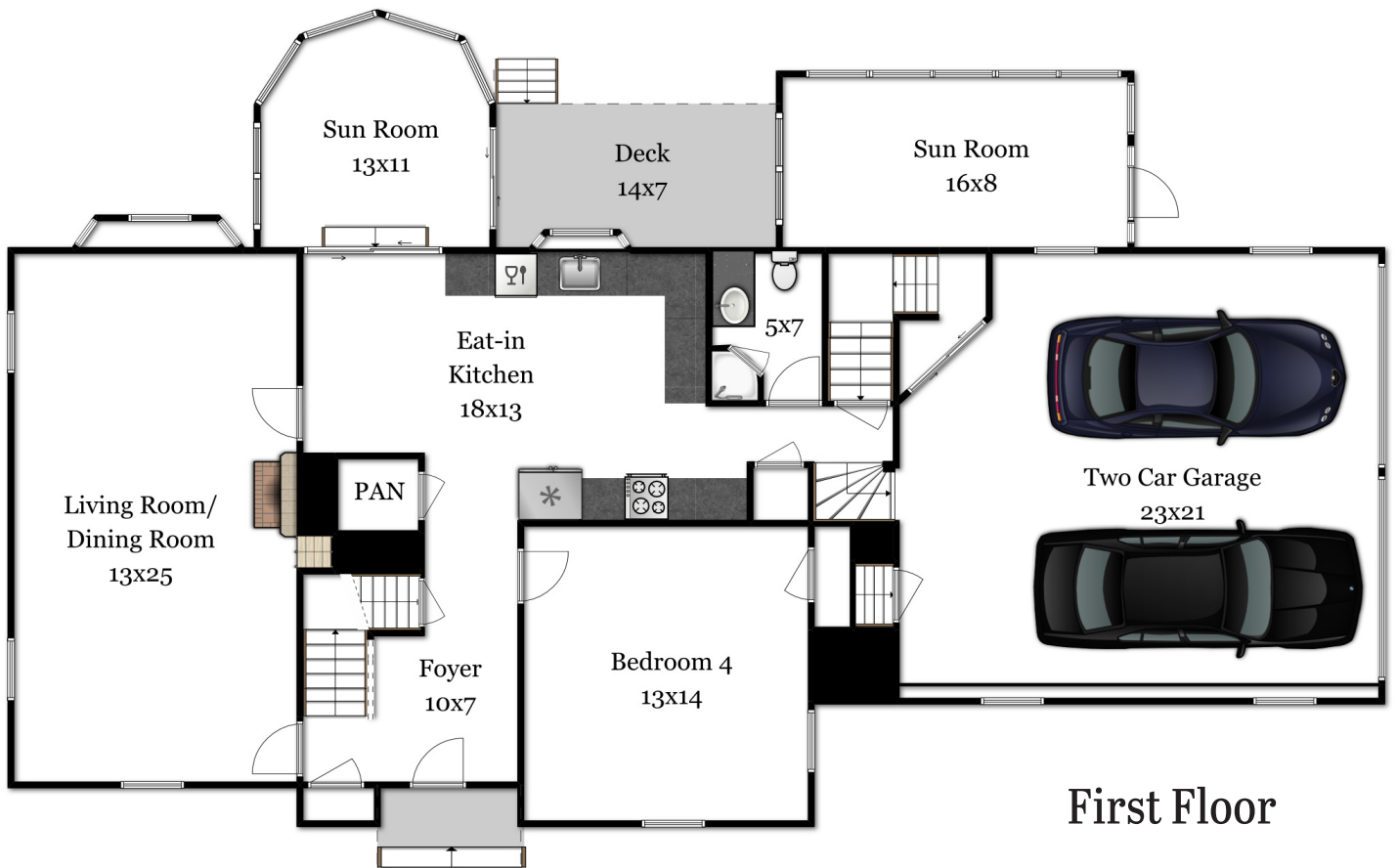


120 Holden Road



Paxton, MA 01612



First Floor

Amy Mullen of Re/Max Professional Associates | (617)-899-2146 | Amymullen@remax.net

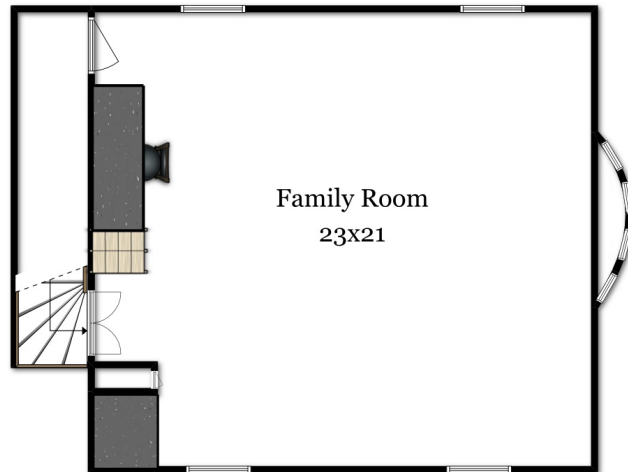


Disclaimer:
Floor Plans are for marketing purposes only. All rooms and measurements are approximate.
Floor Plan by Best View Imaging

120 Holden Road



Paxton, MA 01612



Family Room

Amy Mullen of Re/Max Professional Associates | (617)-899-2146 | Amymullen@remax.net

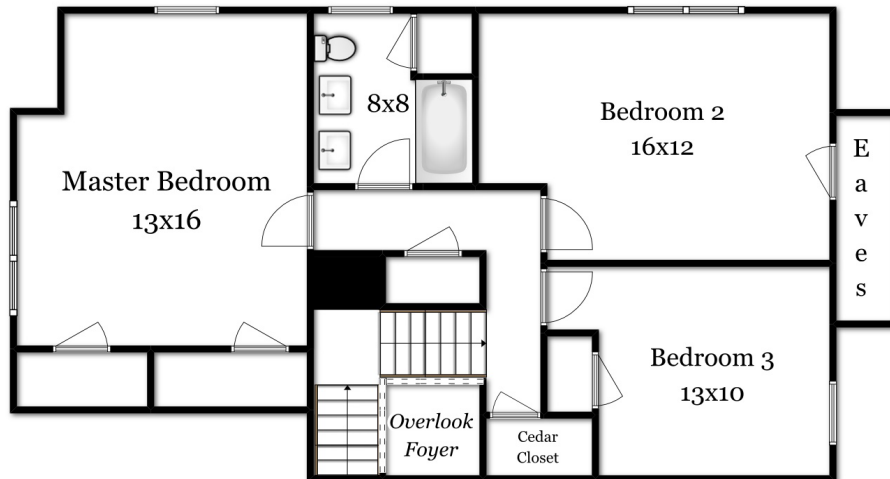


Disclaimer:
Floor Plans are for marketing purposes only. All rooms and measurements are approximate.
Floor Plan by Best View Imaging

120 Holden Road



Paxton, MA 01612



Second Floor

Amy Mullen of Re/Max Professional Associates | (617)-899-2146 | Amymullen@remax.net

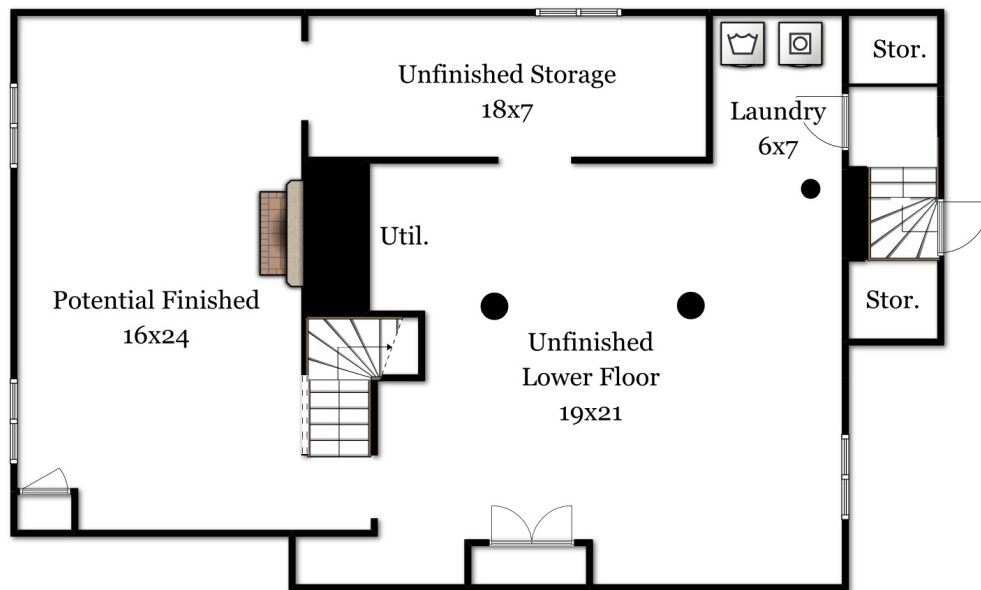


Disclaimer:
Floor Plans are for marketing purposes only. All rooms and measurements are approximate.
Floor Plan by Best View Imaging

120 Holden Road



Paxton, MA 01612



Lower Floor

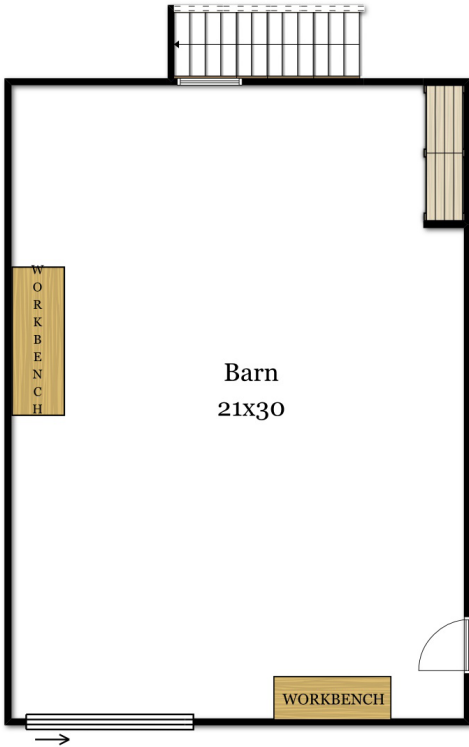
Amy Mullen of Re/Max Professional Associates | (617)-899-2146 | Amymullen@remax.net



Disclaimer:
Floor Plans are for marketing purposes only. All rooms and measurements are approximate.
Floor Plan by Best View Imaging

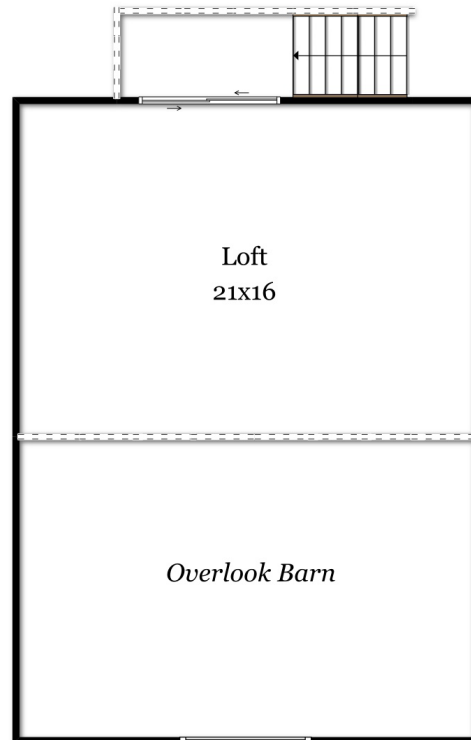
120 Holden Road

Paxton, MA 01612



Barn:
First Floor

Barn:
Second Floor



Amy Mullen of Re/Max Professional Associates | (617)-899-2146 | Amymullen@remax.net



Disclaimer:
Floor Plans are for marketing purposes only. All rooms and measurements are approximate.
Floor Plan by Best View Imaging