

NEXT PHASE STUDIOS,
 INC.
 344 BOYLSTON STREET
 BOSTON, MA 02119
 T 617-375-9300
 F 617-375-9398
 WWW.NPS-ARCHITECTS.COM

800 CENTRE ST
 800 CENTRE STREET, JAMAICA PLAIN MA
 02130

DATE: 12/18/20
 SCALE: 1/4" = 1'-0"
 DRAWN BY: DTM
 CHECKED BY: NPS
 PROJECT #: 20026

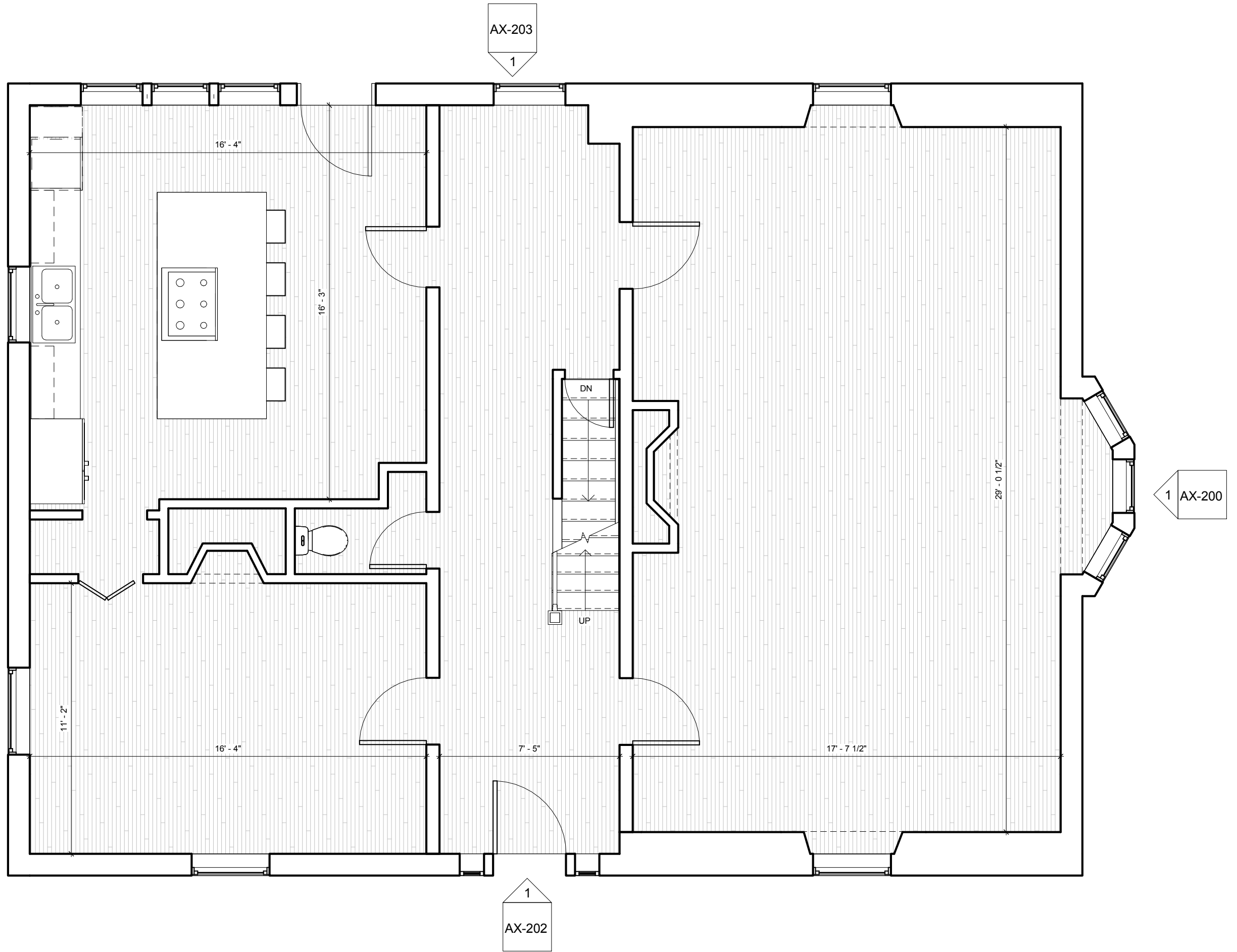
REVISIONS:

| | |
|--|--|
| | |
| | |
| | |

EXISTING BASEMENT PLAN

AX-100





NEXT PHASE STUDIOS,
INC.
344 BOYLSTON STREET
BOSTON, MA 02119
T 617-375-9300
F 617-375-9398
WWW.NPS-ARCHITECTS.COM

800 CENTRE ST
800 CENTRE STREET, JAMAICA PLAIN MA
02130

DATE: 12/18/20
SCALE: 1/4" = 1'-0"
DRAWN BY: DTM
CHECKED BY: NPS
PROJECT #: 20026

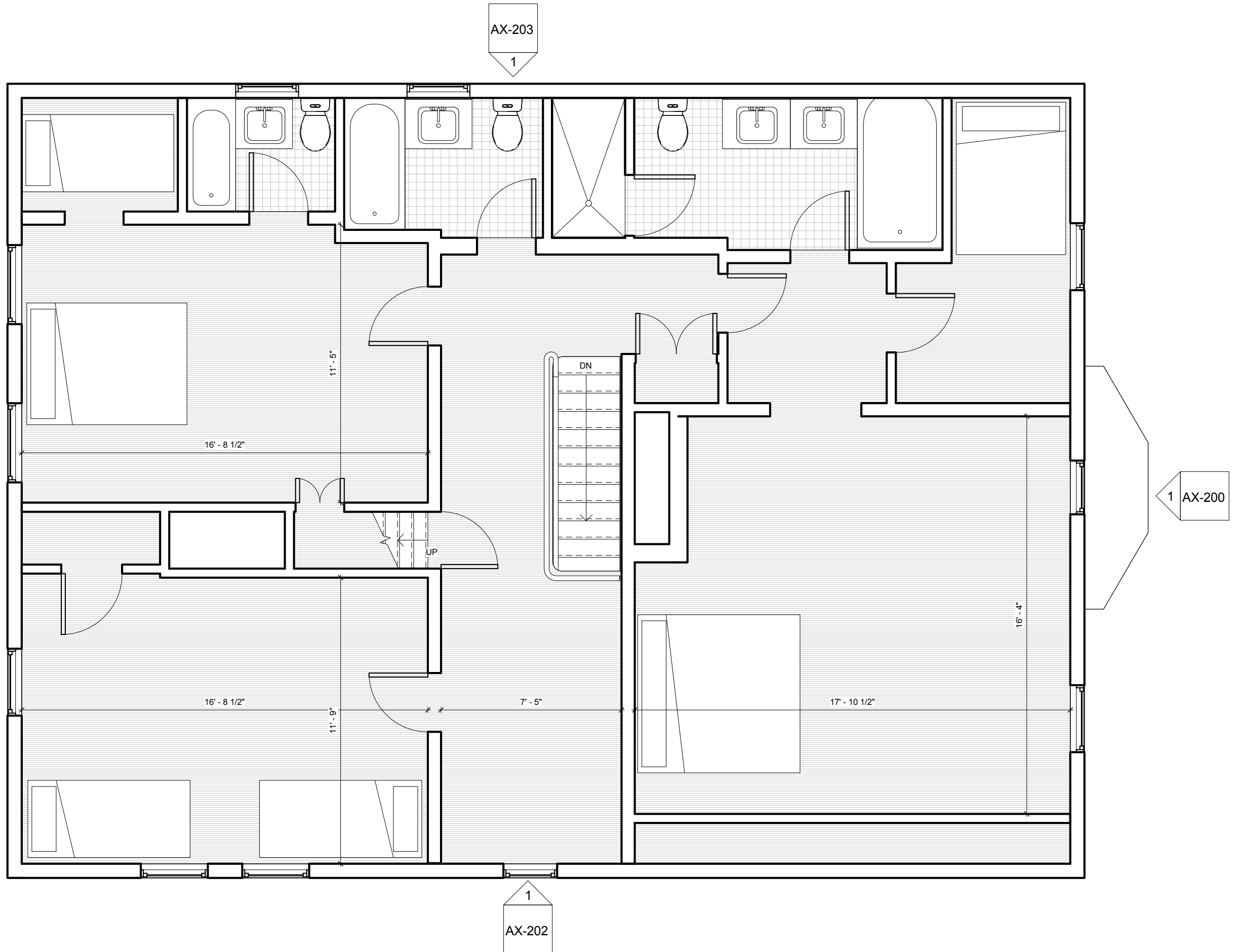
REVISIONS:

| | |
|--|--|
| | |
| | |
| | |

EXISTING FIRST
FLOOR PLAN

AX-101





NEXT PHASE STUDIOS,
INC.
344 BOYLSTON STREET
BOSTON, MA 02119
T 617-375-9300
F 617-375-9398
WWW.NPS-ARCHITECTS.COM

800 CENTRE ST
800 CENTRE STREET, JAMAICA PLAIN MA
02130

DATE: 12/18/20
SCALE: 1/4" = 1'-0"
DRAWN BY: DTM
CHECKED BY: NPS
PROJECT #: 20026

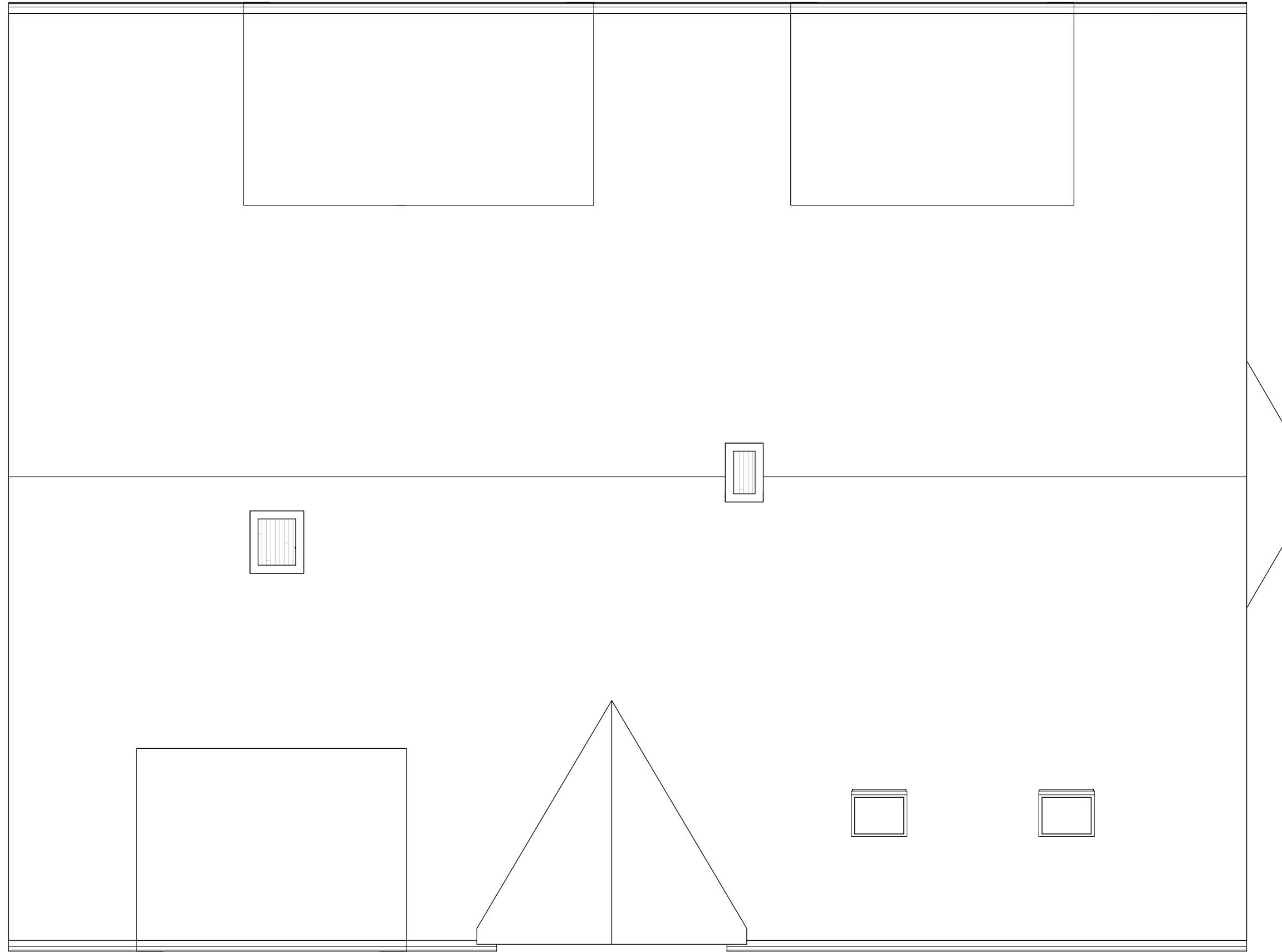
REVISIONS:

| | |
|--|--|
| | |
| | |
| | |

EXISTING SECOND
FLOOR PLAN

AX-102





NEXT PHASE STUDIOS,
INC.

344 BOYLSTON STREET
BOSTON, MA 02119
T 617-375-9300
F 617-375-9398
WWW.NPS-ARCHITECTS.COM

800 CENTRE ST

800 CENTRE STREET, JAMAICA PLAIN MA
02130

DATE: 12/18/20
SCALE: 1/4" = 1'-0"
DRAWN BY: DTM
CHECKED BY: NPS
PROJECT #: 20026

REVISIONS:

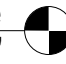
| NO. | DESCRIPTION |
|-----|-------------|
| | |
| | |
| | |

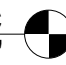
EXISTING ROOF
PLAN


AX-103






Top of Ridge
30' - 9" 

T.O.F.F. Attic
22' - 4" 

T.O.F.F. Second
Floor
11' - 2" 

T.O.F.F. First Floor
0" 

NEXT PHASE STUDIOS,
INC.

344 BOYLSTON STREET
BOSTON, MA 02119
T 617-375-9300
F 617-375-9398
WWW.NPS-ARCHITECTS.COM

800 CENTRE ST

800 CENTRE STREET, JAMAICA PLAIN MA
02130

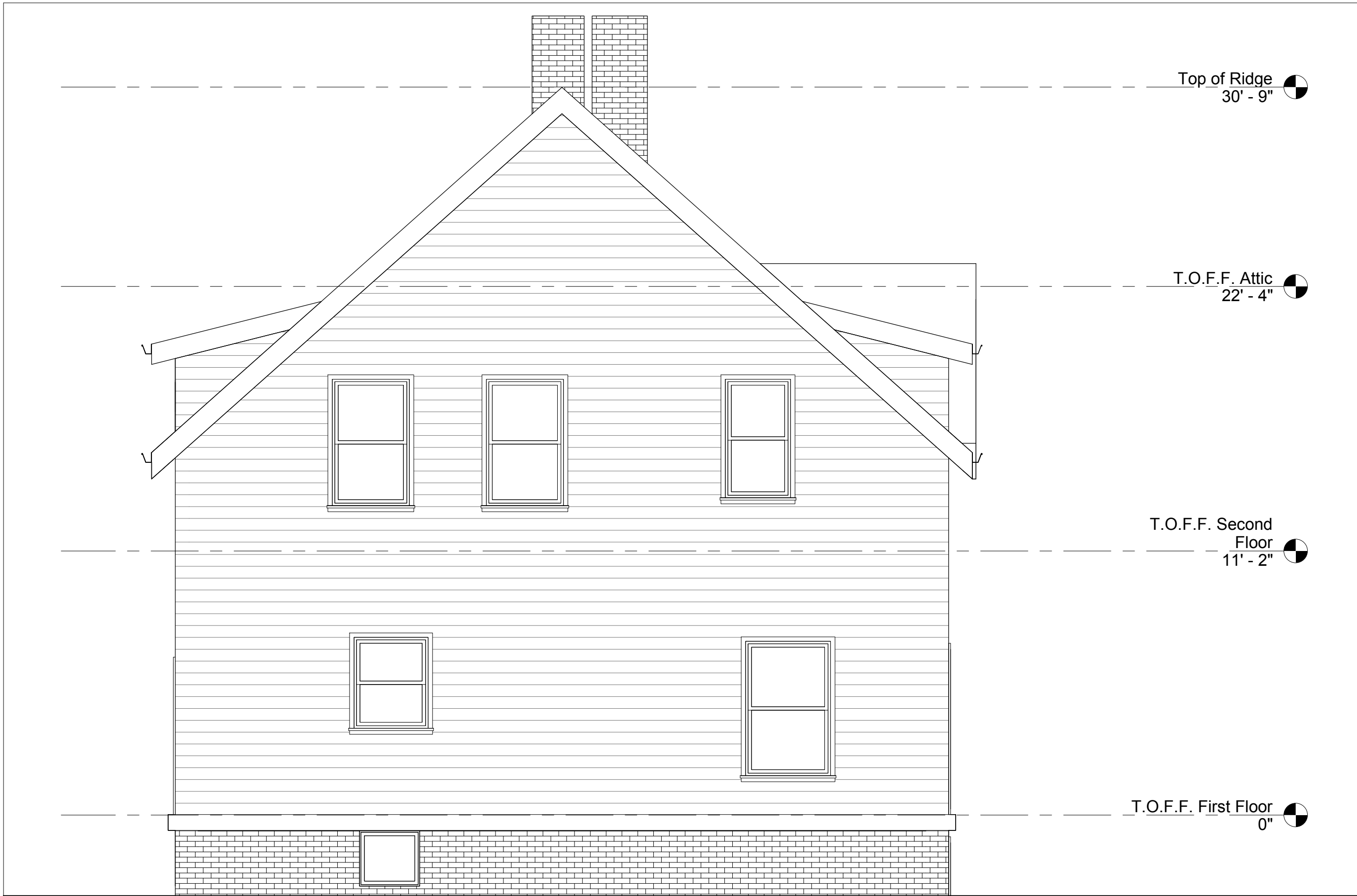
DATE: 12/18/20
SCALE: 1/4" = 1'-0"
DRAWN BY: DTM
CHECKED BY: NPS
PROJECT #: 20026

REVISIONS:

| | |
|--|--|
| | |
| | |
| | |

EXISTING NORTH
ELEVATION

AX-200



NEXT PHASE STUDIOS,
INC.

344 BOYLSTON STREET
BOSTON, MA 02119
T 617-375-9300
F 617-375-9398
WWW.NPS-ARCHITECTS.COM

800 CENTRE ST

800 CENTRE STREET, JAMAICA PLAIN MA
02130

DATE: 12/18/20
SCALE: 1/4" = 1'-0"
DRAWN BY: DTM
CHECKED BY: NPS
PROJECT #: 20026

REVISIONS:

| | |
|--|--|
| | |
| | |
| | |

EXISTING SOUTH
ELEVATION

AX-201



Top of Ridge
30' - 9"

T.O.F.F. Attic
22' - 4"

T.O.F.F. Second
Floor
11' - 2"

T.O.F.F. First Floor
0"

NEXT PHASE STUDIOS,
INC.

344 BOYLSTON STREET
BOSTON, MA 02119

T 617-375-9300
F 617-375-9398
WWW.NPS-ARCHITECTS.COM

800 CENTRE ST

800 CENTRE STREET, JAMAICA PLAIN MA
02130

DATE: 12/18/20
SCALE: 1/4" = 1'-0"
DRAWN BY: DTM
CHECKED BY: NPS
PROJECT #: 20026

REVISIONS:

EXISTING EAST
ELEVATION

AX-202

EXISTING EAST ELEVATION

1/4" = 1'-0"

1



NEXT PHASE STUDIOS,
INC.
344 BOYLSTON STREET
BOSTON, MA 02119
T 617-375-9300
F 617-375-9398
WWW.NPS-ARCHITECTS.COM

800 CENTRE ST
800 CENTRE STREET, JAMAICA PLAIN MA
02130

DATE: 12/18/20
SCALE: 1/4" = 1'-0"
DRAWN BY: DTM
CHECKED BY: NPS
PROJECT #: 20026

REVISIONS:

| | |
|--|--|
| | |
| | |
| | |

EXISTING WEST
ELEVATION

AX-203